

PEARL STREET commons



Pearl Street Commons will provide quality housing and services targeting persons with a disability and veterans, close to the amenities of downtown McHenry and conveniently placed along two bus routes. The development will include Full Circle's signature services provided by our community partners.

Highlights

- 25 units of housing targeted towards veterans and persons with a disability
- 3 two bedroom, 22 one bedroom units
- Accessible, universally designed units
- Green certified, energy efficient building
- On-site case manager/community service coordinator, property manager, maintenance staff

On-site services

- Options include: medical screenings, therapist visits, transportation resources, case management, health and fitness resources, community activities, benefits assistance, and more.

On-Site Amenities

- Community room, laundry room, library, computer lab, outdoor patio, extra storage lockers, on-site parking, and secured entry

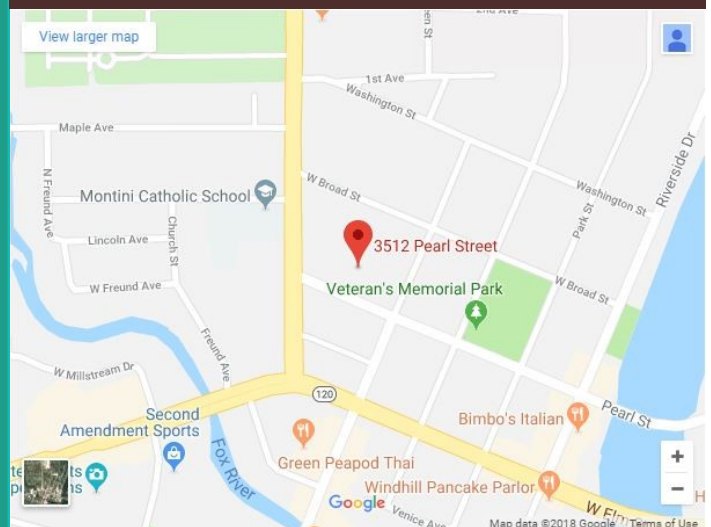
PEARL STREET commons

3512 Pearl St
McHenry, IL 60050

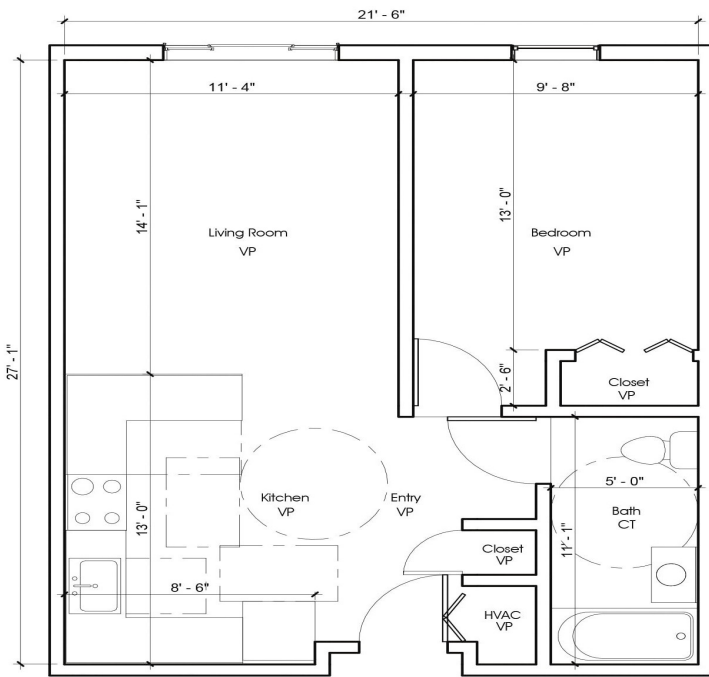
For more information:

Email: pearl.manager@fccommunities.org

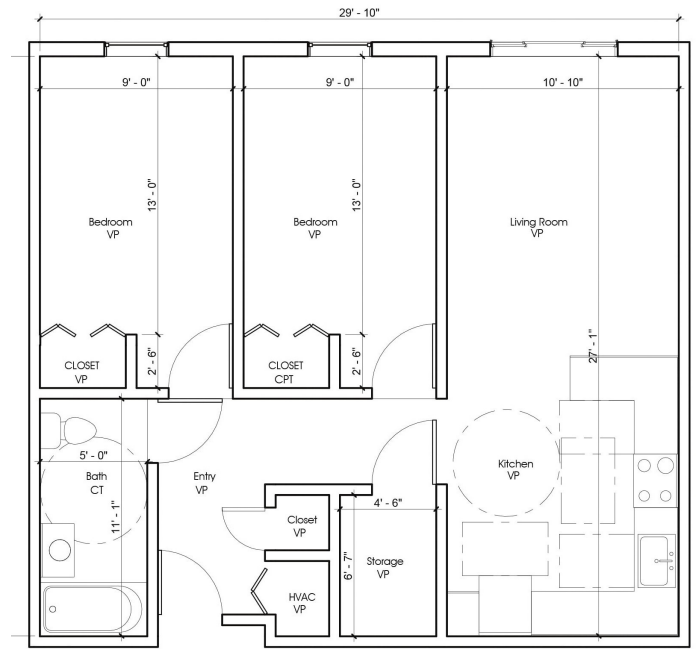
Phone: 815.242.1801



a full circle community



TYPE A - 1 BEDROOM 577 SF



TYPE B - 2 BEDROOM 802 SF

Unit Size	Number of Units	Square Feet
One Bedroom	22	530-542
Two Bedroom	3	714

Household Size	1 person	2 people	3 people	4 people
Income Limit	\$17,790	\$20,310	\$22,860	\$25,380



Located close to all your basic needs!

Name	Category	Distance in miles
Jewel Osco	Grocery	.62
Meijer	Grocery	.79
Big R	Grocery	.36
CVS	Health Services	.38
McHenry Family Dental	Health Services	.05
Veterans Memorial Park	Recreation	.15
McHenry Riverwalk	Recreation	.29
VFW Hall	Social	.68
PACE Bus Stop Route 806	Transit	.01
PACE Bust Stop Route 807	Transit	.13
McHenry Metra Stop	Transit	.66
Fire Department	Safety	.11
McHenry Public Library	Library	.75
Landmark Elementary	School	.26
McHenry High School East	School	.38

Sample interior photographs from a similar Full Circle Community